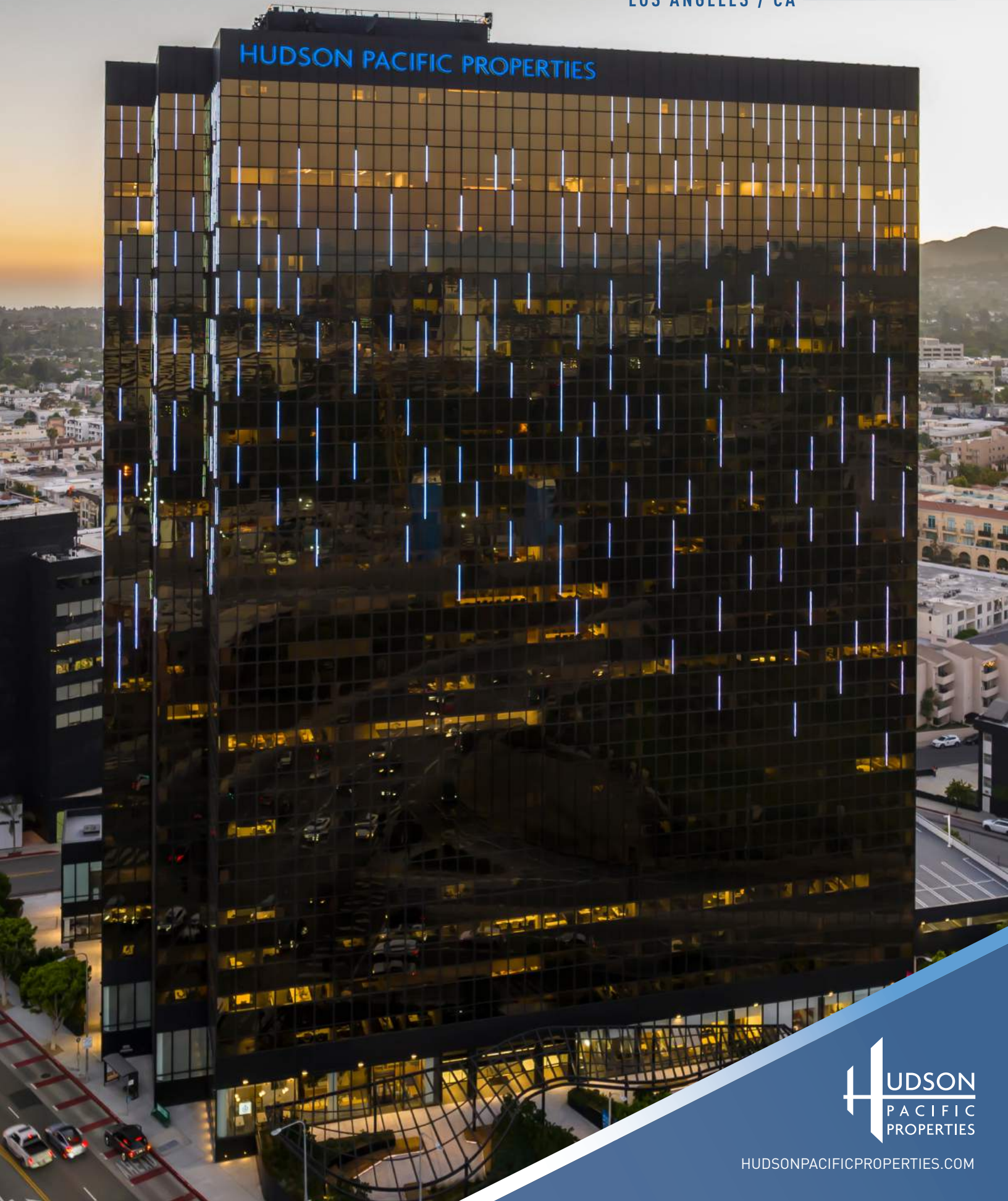


11601 WILSHIRE

LOS ANGELES / CA



[HUDSONPACIFICPROPERTIES.COM](http://HUDSONPACIFICPROPERTIES.COM)



## FEATURES + AMENITIES

# AT THE INTERSECTION OF LIFE, STYLE AND BUSINESS

### BUILDING INFO

- + Hudson Pacific Properties' Corporate Headquarters
- + Extensive Lobby Renovation: State-of-the-Art Video Wall & Multiple Collaboration Workspaces
- + VIP & Valet Parking
- + Secured Subterranean Parking with EV Charging Stations
- + On-site Bluestone Lane Café
- + On-Site 24-Hour Security
- + Cost Efficient After-Hours Tenant Controlled HVAC Systems
- + Walkable to Brentwood Shops and Restaurants
- + Immediate Access to 405 & 10 Freeways

**±500,000 SF**  
24-STORY  
OFFICE BUILDING

**±20,000 SF**  
FLOORPLATES

**UNOBSTRUCTED**  
PANORAMIC VIEWS



## LET OUR OFFICES INSPIRE YOU

11601 Wilshire is Hudson Pacific Properties' home and headquarters. Come up to the 9th floor and see what we've done for ourselves that we can do for you—walls of windows feature 360-degree views, open floorplans also accommodate executive offices, common areas that actually get used and contemporary design touches that wow. Upon purchasing the building in 2017, we undertook a massive capital improvement campaign from the parking garage to the lobby to the building's exterior. All of which we're excited to share with you.





## THERE'S NOTHING COMMON ABOUT OUR COMMON AREAS

Featuring a striking video wall and multiple collaboration spaces, our lobby has been completely renovated and redesigned for our tenant's convenience — and delight.



# MAKING THE GREAT OUTDOORS EVEN GREATER

Our exterior plaza with a fast casual restaurant, a dramatic trellis and lush landscaping will make you forget you're in the heart of Westside's hustle and bustle. With multiple seating areas, you'll have a hard time making it upstairs to the office.





## THE EPITOME OF TURNKEY

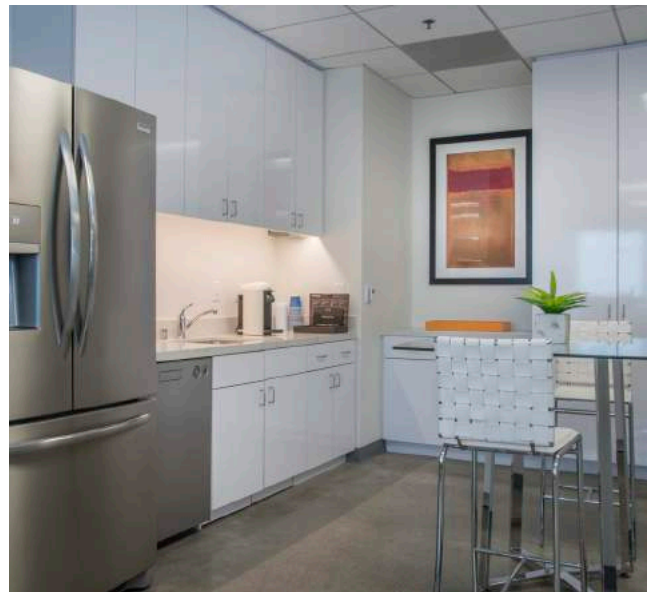
Our move-in ready suites include:

**CONFERENCE ROOM,  
EXECUTIVE OFFICES &  
RECEPTION AREA**

**POLISHED CONCRETE FLOORS**

**FULLY EQUIPPED KITCHENS**

**FURNISHED OR UNFURNISHED**



# GET TO KNOW THE NEIGHBORHOOD

Within walking distance:

**30+**  
RESTAURANTS & CAFES

**10+**  
FITNESS CENTERS

**10+**  
NAIL & BEAUTY SALONS

**10+**  
BANKS & PHARMACIES



# REIMAGINING NOW. TO CREATE WHAT'S NEXT.



FOR MORE INFORMATION CONTACT: 11601 WILSHIRE BLVD, SUITE 900 LOS ANGELES, CA 90025 | 310 445 5700

WHERE WE WORK IS NOT JUST WHERE WE WORK. IT'S PART OF WHO WE ARE AND HOW WE THRIVE. AT HUDSON PACIFIC PROPERTIES, THAT'S WHAT DRIVES US TO STAY ONE STEP AHEAD, LOOKING FOR OPPORTUNITIES IN JUST THE RIGHT PLACES TO BRING INNOVATION TO LIFE.

When you partner with us you get a lasting relationship focused on addressing your every need. From an entrance that signals you've arrived to an environment that fosters collaboration, creativity and success, we provide the state-of-the-art infrastructure and excellent service necessary to fulfill your business strategy. And when you're ready, we're here to help you expand for the future, because the sky's the limit.

We're driven to find the next amazing space for today and tomorrow's leading companies – building it from the ground up or reimagining it from the inside out. With Hudson Pacific Properties everything is possible.

